

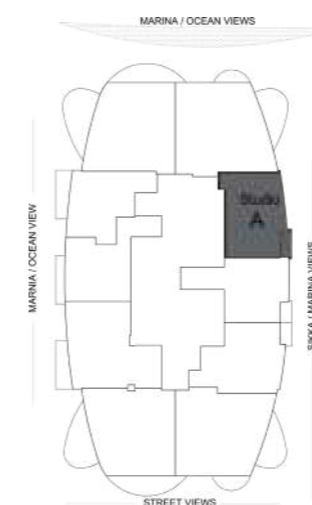


CONDOR
MARINASTAR
RESIDENCES DUBAI

PAYMENT PLANS



STUDIO TYPE APARTMENT TYPE - A



Area Details Type:
A (Studio)

Level:
2nd, 5th - 14th
& 16th - 19th Floor

Living Area:
471.36 sq. ft.

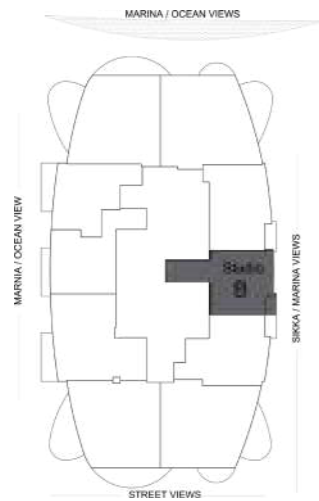
Balcony Area:
33.03 sq. ft.

Total Area:
504.40 sq. ft.

All room sizes and floor plan measurements are approximate and may vary per unit. Floor plans and unit features are preliminary and proposed only. The Developer reserves the right to modify, revise, change or withdraw any or all of the same in its sole and absolute discretion and without prior notice. Depictions of furnishings, finishes, appliances, counters, soffits, floor coverings and other matters of detail, including, without limitation, items of finish and decoration are conceptual only and are not necessarily included in each unit. Consult your Agreement and the Prospectus for items included with your unit.



STUDIO TYPE APARTMENT TYPE - B



Area Details Type:
B (Studio)

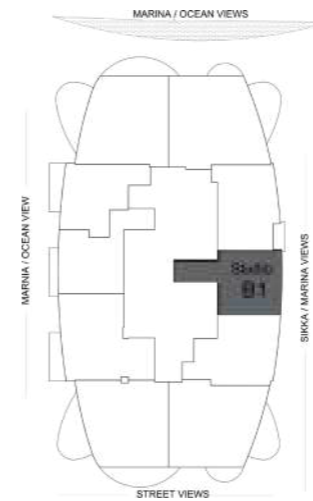
Level:
2nd, 6th - 8th,
14th, 17th & 19th Floor

Living Area:
464.09 sq. ft.

Balcony Area:
26.28 sq. ft.

Total Area:
490.37 sq. ft.

STUDIO TYPE APARTMENT TYPE - B1



Area Details Type:
B1 (Studio)

Level:
5th, 9th - 13th & 16th Floor

Living Area:
483.62 sq. ft.

Balcony Area:
-

Total Area:
483.62 sq. ft.

All room sizes and floor plan measurements are approximate and may vary per unit. Floor plans and unit features are preliminary and proposed only. The Developer reserves the right to modify, revise, change or withdraw any or all of the same in its sole and absolute discretion and without prior notice. Depictions of furnishings, finishes, appliances, counters, soffits, floor coverings and other matters of detail, including, without limitation, items of finish and decoration are conceptual only and are not necessarily included in each unit. Consult your Agreement and the Prospectus for items included with your unit.

All room sizes and floor plan measurements are approximate and may vary per unit. Floor plans and unit features are preliminary and proposed only. The Developer reserves the right to modify, revise, change or withdraw any or all of the same in its sole and absolute discretion and without prior notice. Depictions of furnishings, finishes, appliances, counters, soffits, floor coverings and other matters of detail, including, without limitation, items of finish and decoration are conceptual only and are not necessarily included in each unit. Consult your Agreement and the Prospectus for items included with your unit.



STUDIO TYPE APARTMENT TYPE - C



Area Details Type:
C (Studio)

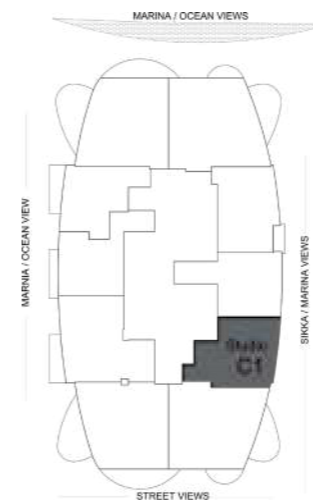
Level:
2nd - 3rd, 6th - 8th, 14th - 15th
& 17th - 19th Floor

Living Area:
485.00 sq. ft.

Balcony Area:
24.69 sq. ft.

Total Area:
509.69 sq. ft.

STUDIO TYPE APARTMENT TYPE - C1



Area Details Type:
C1 (Studio)

Level:
5th, 9th - 13th & 16th Floor

Living Area:
500.41 sq. ft.

Balcony Area:
-

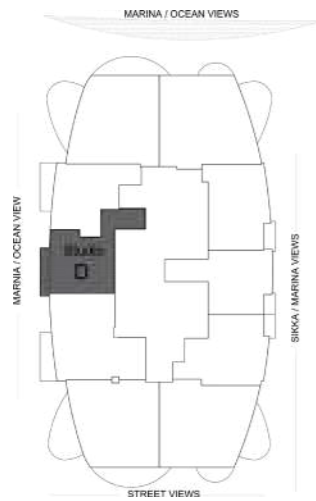
Total Area:
500.41 sq. ft.

All room sizes and floor plan measurements are approximate and may vary per unit. Floor plans and unit features are preliminary and proposed only. The Developer reserves the right to modify, revise, change or withdraw any or all of the same in its sole and absolute discretion and without prior notice. Depictions of furnishings, finishes, appliances, counters, soffits, floor coverings and other matters of detail, including, without limitation, items of finish and decoration are conceptual only and are not necessarily included in each unit. Consult your Agreement and the Prospectus for items included with your unit.

All room sizes and floor plan measurements are approximate and may vary per unit. Floor plans and unit features are preliminary and proposed only. The Developer reserves the right to modify, revise, change or withdraw any or all of the same in its sole and absolute discretion and without prior notice. Depictions of furnishings, finishes, appliances, counters, soffits, floor coverings and other matters of detail, including, without limitation, items of finish and decoration are conceptual only and are not necessarily included in each unit. Consult your Agreement and the Prospectus for items included with your unit.



STUDIO TYPE APARTMENT TYPE - D



Area Details Type:
D (Studio)

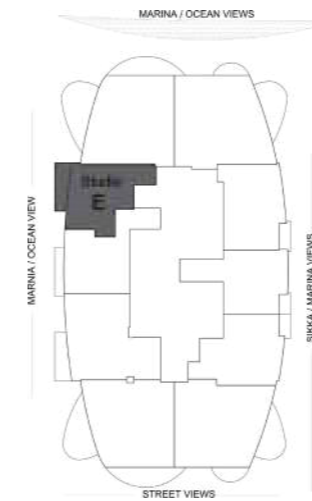
Level:
2nd, 3rd & 5th - 8th
& 10th-19th Floor

Living Area:
465.41 sq. ft.

Balcony Area:
41.55 sq. ft.

Total Area:
506.96 sq. ft.

STUDIO TYPE APARTMENT TYPE - E



Area Details Type:
E (Studio)

Level:
2nd, 3rd & 5th - 8th
& 10th-19th Floor

Living Area:
414.01 sq. ft.

Balcony Area:
63.07 sq. ft.

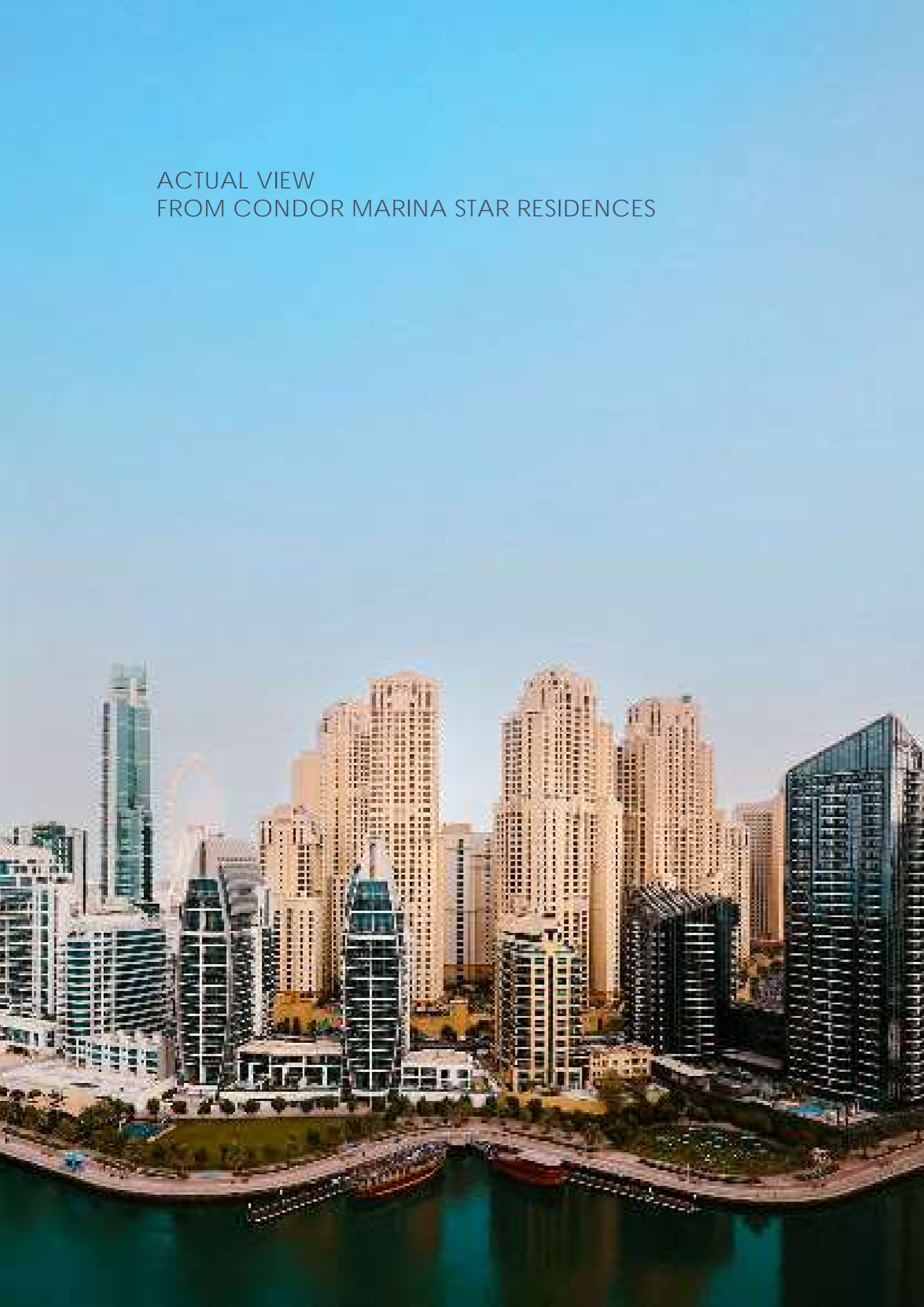
Total Area:
477.08 sq. ft.

All room sizes and floor plan measurements are approximate and may vary per unit. Floor plans and unit features are preliminary and proposed only. The Developer reserves the right to modify, revise, change or withdraw any or all of the same in its sole and absolute discretion and without prior notice. Depictions of furnishings, finishes, appliances, counters, soffits, floor coverings and other matters of detail, including, without limitation, items of finish and decoration are conceptual only and are not necessarily included in each unit. Consult your Agreement and the Prospectus for items included with your unit.

All room sizes and floor plan measurements are approximate and may vary per unit. Floor plans and unit features are preliminary and proposed only. The Developer reserves the right to modify, revise, change or withdraw any or all of the same in its sole and absolute discretion and without prior notice. Depictions of furnishings, finishes, appliances, counters, soffits, floor coverings and other matters of detail, including, without limitation, items of finish and decoration are conceptual only and are not necessarily included in each unit. Consult your Agreement and the Prospectus for items included with your unit.



ACTUAL VIEW
FROM CONDOR MARINA STAR RESIDENCES



ONE-BEDROOM APARTMENT TYPE - A



Area Details Type:
A (1Bedroom)

Level:
1st - 3rd & 5th - 19th Floor

Living Area:
701.38 sq. ft.

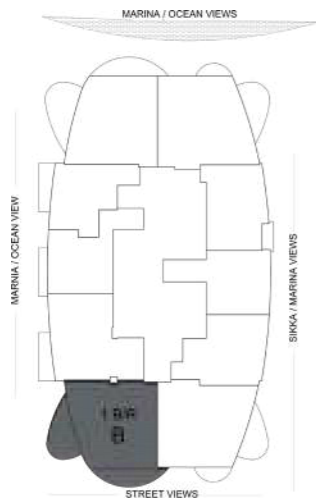
Balcony Area:
139.29 sq. ft.

Total Area:
840.67 sq. ft.

All room sizes and floor plan measurements are approximate and may vary per unit. Floor plans and unit features are preliminary and proposed only. The Developer reserves the right to modify, revise, change or withdraw any or all of the same in its sole and absolute discretion and without prior notice. Depictions of furnishings, finishes, appliances, counters, soffits, floor coverings and other matters of detail, including, without limitation, items of finish and decoration are conceptual only and are not necessarily included in each unit. Consult your Agreement and the Prospectus for items included with your unit.



ONE-BEDROOM APARTMENT TYPE - B



Area Details Type:

B (1Bedroom)

Level:

2nd, 3rd & 5th - 19th Floor

Living Area:

681.91 sq. ft.

Balcony Area:

239.92 sq. ft.

Total Area:

921.83 sq. ft.

ONE-BEDROOM APARTMENT TYPE - B1



Area Details Type:

B1 (1Bedroom)

Level:

1st Floor

Living Area:

682.75 sq. ft.

Balcony Area:

372.43 sq. ft.

Total Area:

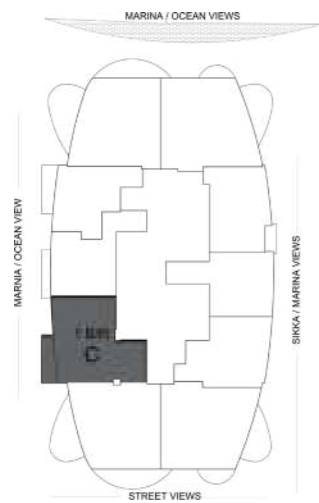
1,055.19 sq. ft.

All room sizes and floor plan measurements are approximate and may vary per unit. Floor plans and unit features are preliminary and proposed only. The Developer reserves the right to modify, revise, change or withdraw any or all of the same in its sole and absolute discretion and without prior notice. Depictions of furnishings, finishes, appliances, counters, soffits, floor coverings and other matters of detail, including, without limitation, items of finish and decoration are conceptual only and are not necessarily included in each unit. Consult your Agreement and the Prospectus for items included with your unit.

All room sizes and floor plan measurements are approximate and may vary per unit. Floor plans and unit features are preliminary and proposed only. The Developer reserves the right to modify, revise, change or withdraw any or all of the same in its sole and absolute discretion and without prior notice. Depictions of furnishings, finishes, appliances, counters, soffits, floor coverings and other matters of detail, including, without limitation, items of finish and decoration are conceptual only and are not necessarily included in each unit. Consult your Agreement and the Prospectus for items included with your unit.



ONE-BEDROOM APARTMENT TYPE - C



Area Details Type:

C (1Bedroom)

Level:

5th - 19th Floor

Living Area:

624.20 sq. ft.

Balcony Area:

62.97 sq. ft.

Total Area:

687.17 sq. ft.

ONE-BEDROOM APARTMENT TYPE - C1



Area Details Type:

C1 (1Bedroom)

Level:

1st - 3rd Floor

Living Area:

715.98 sq. ft.

Balcony Area:

-

Total Area:

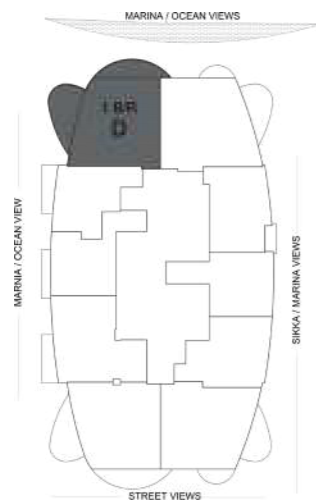
715.98 sq. ft.

All room sizes and floor plan measurements are approximate and may vary per unit. Floor plans and unit features are preliminary and proposed only. The Developer reserves the right to modify, revise, change or withdraw any or all of the same in its sole and absolute discretion and without prior notice. Depictions of furnishings, finishes, appliances, counters, soffits, floor coverings and other matters of detail, including, without limitation, items of finish and decoration are conceptual only and are not necessarily included in each unit. Consult your Agreement and the Prospectus for items included with your unit.

All room sizes and floor plan measurements are approximate and may vary per unit. Floor plans and unit features are preliminary and proposed only. The Developer reserves the right to modify, revise, change or withdraw any or all of the same in its sole and absolute discretion and without prior notice. Depictions of furnishings, finishes, appliances, counters, soffits, floor coverings and other matters of detail, including, without limitation, items of finish and decoration are conceptual only and are not necessarily included in each unit. Consult your Agreement and the Prospectus for items included with your unit.



ONE-BEDROOM APARTMENT TYPE - D



Area Details Type:

D (1Bedroom)

Level:

2nd, 3rd, 5th - 13th
& 15th - 19th Floor

Living Area:

696.29 sq. ft.

Balcony Area:

249.12 sq. ft.

Total Area:

945.41 sq. ft.

ONE-BEDROOM APARTMENT TYPE - D1



Area Details Type:

D1 (1Bedroom)

Level:

14th Floor

Living Area:

617.20 sq. ft.

Balcony Area:

249.18 sq. ft.

Total Area:

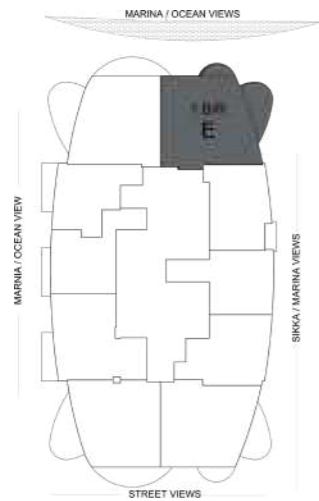
866.39 sq. ft.

All room sizes and floor plan measurements are approximate and may vary per unit. Floor plans and unit features are preliminary and proposed only. The Developer reserves the right to modify, revise, change or withdraw any or all of the same in its sole and absolute discretion and without prior notice. Depictions of furnishings, finishes, appliances, counters, soffits, floor coverings and other matters of detail, including, without limitation, items of finish and decoration are conceptual only and are not necessarily included in each unit. Consult your Agreement and the Prospectus for items included with your unit.

All room sizes and floor plan measurements are approximate and may vary per unit. Floor plans and unit features are preliminary and proposed only. The Developer reserves the right to modify, revise, change or withdraw any or all of the same in its sole and absolute discretion and without prior notice. Depictions of furnishings, finishes, appliances, counters, soffits, floor coverings and other matters of detail, including, without limitation, items of finish and decoration are conceptual only and are not necessarily included in each unit. Consult your Agreement and the Prospectus for items included with your unit.



ONE-BEDROOM APARTMENT TYPE - E



Area Details Type:

E (1Bedroom)

Level:

2nd, 3rd & 5th - 19th Floor

Living Area:

767.16 sq. ft.

Balcony Area:

144.89 sq. ft.

Total Area:

912.05 sq. ft.

ONE-BEDROOM APARTMENT TYPE - F



Area Details Type:

F (1Bedroom)

Level:

1st Floor

Living Area:

582.44 sq. ft.

Balcony Area:

39.93 sq. ft.

Total Area:

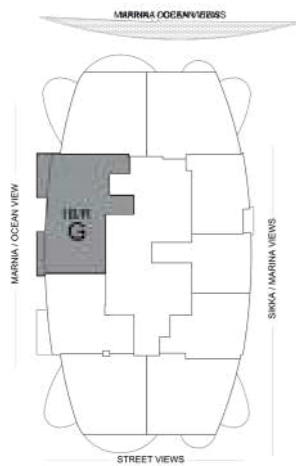
622.37 sq. ft.

All room sizes and floor plan measurements are approximate and may vary per unit. Floor plans and unit features are preliminary and proposed only. The Developer reserves the right to modify, revise, change or withdraw any or all of the same in its sole and absolute discretion and without prior notice. Depictions of furnishings, finishes, appliances, counters, soffits, floor coverings and other matters of detail, including, without limitation, items of finish and decoration are conceptual only and are not necessarily included in each unit. Consult your Agreement and the Prospectus for items included with your unit.

All room sizes and floor plan measurements are approximate and may vary per unit. Floor plans and unit features are preliminary and proposed only. The Developer reserves the right to modify, revise, change or withdraw any or all of the same in its sole and absolute discretion and without prior notice. Depictions of furnishings, finishes, appliances, counters, soffits, floor coverings and other matters of detail, including, without limitation, items of finish and decoration are conceptual only and are not necessarily included in each unit. Consult your Agreement and the Prospectus for items included with your unit.



ONE-BEDROOM APARTMENT TYPE - G



Area Details Type:
G (1Bedroom)

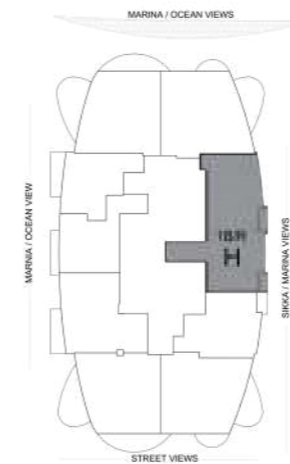
Level:
9th Floor

Living Area:
880.27 sq. ft.

Balcony Area:
104.84 sq. ft.

Total Area:
985.11 sq. ft.

ONE-BEDROOM APARTMENT TYPE - H



Area Details Type:
H (1Bedroom)

Level:
3rd & 15th Floor

Living Area:
934.31 sq. ft.

Balcony Area:
59.74 sq. ft.

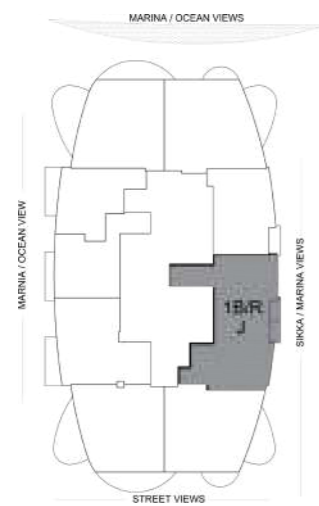
Total Area:
994.05 sq. ft.

All room sizes and floor plan measurements are approximate and may vary per unit. Floor plans and unit features are preliminary and proposed only. The Developer reserves the right to modify, revise, change or withdraw any or all of the same in its sole and absolute discretion and without prior notice. Depictions of furnishings, finishes, appliances, counters, soffits, floor coverings and other matters of detail, including, without limitation, items of finish and decoration are conceptual only and are not necessarily included in each unit. Consult your Agreement and the Prospectus for items included with your unit.

All room sizes and floor plan measurements are approximate and may vary per unit. Floor plans and unit features are preliminary and proposed only. The Developer reserves the right to modify, revise, change or withdraw any or all of the same in its sole and absolute discretion and without prior notice. Depictions of furnishings, finishes, appliances, counters, soffits, floor coverings and other matters of detail, including, without limitation, items of finish and decoration are conceptual only and are not necessarily included in each unit. Consult your Agreement and the Prospectus for items included with your unit.



ONE-BEDROOM APARTMENT TYPE - J



Area Details Type:
J (1Bedroom)

Level:
1st & 18th Floor

Living Area:
948.30 sq. ft.

Balcony Area:
51.24 sq. ft.

Total Area:
999.54 sq. ft.

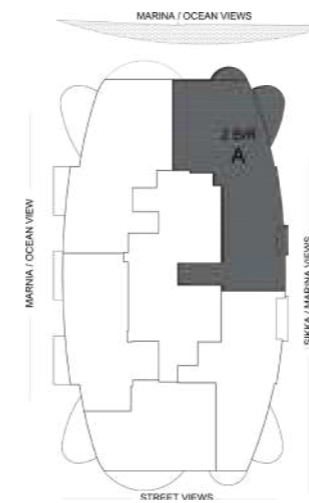
All room sizes and floor plan measurements are approximate and may vary per unit. Floor plans and unit features are preliminary and proposed only. The Developer reserves the right to modify, revise, change or withdraw any or all of the same in its sole and absolute discretion and without prior notice. Depictions of furnishings, finishes, appliances, counters, soffits, floor coverings and other matters of detail, including, without limitation, items of finish and decoration are conceptual only and are not necessarily included in each unit. Consult your Agreement and the Prospectus for items included with your unit.



ACTUAL VIEW
FROM CONDOR MARINA STAR RESIDENCES



TWO-BEDROOM APARTMENT TYPE - A



Area Details Type:
A (2Bedroom)

Level:
4th & 20th - 24th Floor

Living Area:
1,561.74 sq. ft.

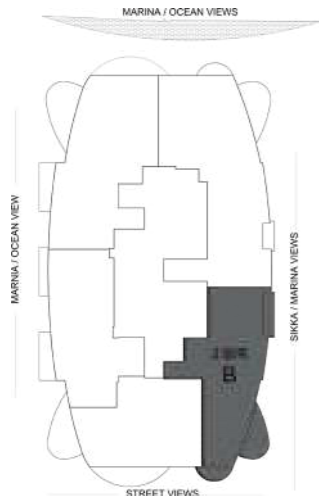
Balcony Area:
178.61 sq. ft.

Total Area:
1,740.34 sq. ft.

All room sizes and floor plan measurements are approximate and may vary per unit. Floor plans and unit features are preliminary and proposed only. The Developer reserves the right to modify, revise, change or withdraw any or all of the same in its sole and absolute discretion and without prior notice. Depictions of furnishings, finishes, appliances, counters, soffits, floor coverings and other matters of detail, including, without limitation, items of finish and decoration are conceptual only and are not necessarily included in each unit. Consult your Agreement and the Prospectus for items included with your unit.



TWO-BEDROOM APARTMENT TYPE - B



Area Details Type:

B (2Bedroom)

Level:

20th - 24th Floor

Living Area:

992.97 sq. ft.

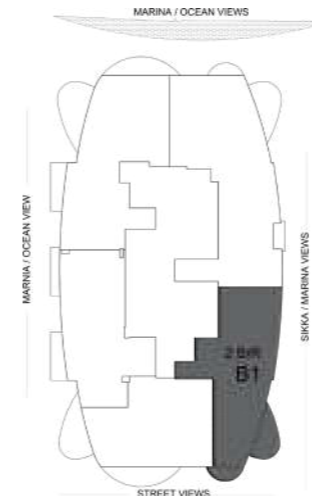
Balcony Area:

190.95 sq. ft.

Total Area:

1,183.92 sq. ft.

TWO-BEDROOM APARTMENT TYPE - B1



Area Details Type:

B1 (2Bedroom)

Level:

4th Floor

Living Area:

1,020.53 sq. ft.

Balcony Area:

139.50 sq. ft.

Total Area:

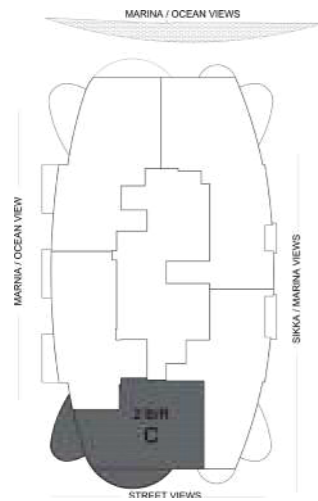
1,160.03 sq. ft.

All room sizes and floor plan measurements are approximate and may vary per unit. Floor plans and unit features are preliminary and proposed only. The Developer reserves the right to modify, revise, change or withdraw any or all of the same in its sole and absolute discretion and without prior notice. Depictions of furnishings, finishes, appliances, counters, soffits, floor coverings and other matters of detail, including, without limitation, items of finish and decoration are conceptual only and are not necessarily included in each unit. Consult your Agreement and the Prospectus for items included with your unit.

All room sizes and floor plan measurements are approximate and may vary per unit. Floor plans and unit features are preliminary and proposed only. The Developer reserves the right to modify, revise, change or withdraw any or all of the same in its sole and absolute discretion and without prior notice. Depictions of furnishings, finishes, appliances, counters, soffits, floor coverings and other matters of detail, including, without limitation, items of finish and decoration are conceptual only and are not necessarily included in each unit. Consult your Agreement and the Prospectus for items included with your unit.



TWO-BEDROOM APARTMENT TYPE - C



Area Details Type:
C (2Bedroom)

Level:
4th & 20th - 24th Floor

Living Area:
912.78 sq. ft.

Balcony Area:
240.32 sq. ft.

Total Area:
1,153.10 sq. ft.

TWO-BEDROOM APARTMENT TYPE - D



Area Details Type:
D (2Bedroom)

Level:
4th & 20th - 24th Floor

Living Area:
1,006.53 sq. ft.

Balcony Area:
105.04 sq. ft.

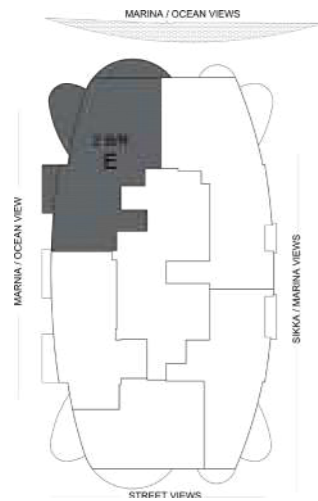
Total Area:
1,111.57 sq. ft.

All room sizes and floor plan measurements are approximate and may vary per unit. Floor plans and unit features are preliminary and proposed only. The Developer reserves the right to modify, revise, change or withdraw any or all of the same in its sole and absolute discretion and without prior notice. Depictions of furnishings, finishes, appliances, counters, soffits, floor coverings and other matters of detail, including, without limitation, items of finish and decoration are conceptual only and are not necessarily included in each unit. Consult your Agreement and the Prospectus for items included with your unit.

All room sizes and floor plan measurements are approximate and may vary per unit. Floor plans and unit features are preliminary and proposed only. The Developer reserves the right to modify, revise, change or withdraw any or all of the same in its sole and absolute discretion and without prior notice. Depictions of furnishings, finishes, appliances, counters, soffits, floor coverings and other matters of detail, including, without limitation, items of finish and decoration are conceptual only and are not necessarily included in each unit. Consult your Agreement and the Prospectus for items included with your unit.



TWO-BEDROOM APARTMENT TYPE - E



Area Details Type:

E (2Bedroom)

Level:

20th - 24th Floor

Living Area:

1,313.41 sq. ft.

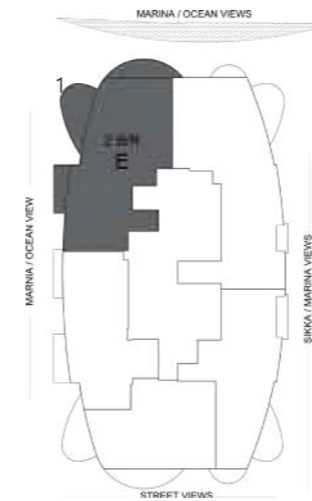
Balcony Area:

312.26 sq. ft.

Total Area:

1,625.67 sq. ft.

TWO-BEDROOM APARTMENT TYPE - E1



Area Details Type:

E1 (2Bedroom)

Level:

4th Floor

Living Area:

1,240.11 sq. ft.

Balcony Area:

312.15 sq. ft.

Total Area:

1,552.26 sq. ft.

All room sizes and floor plan measurements are approximate and may vary per unit. Floor plans and unit features are preliminary and proposed only. The Developer reserves the right to modify, revise, change or withdraw any or all of the same in its sole and absolute discretion and without prior notice. Depictions of furnishings, finishes, appliances, counters, soffits, floor coverings and other matters of detail, including, without limitation, items of finish and decoration are conceptual only and are not necessarily included in each unit. Consult your Agreement and the Prospectus for items included with your unit.

All room sizes and floor plan measurements are approximate and may vary per unit. Floor plans and unit features are preliminary and proposed only. The Developer reserves the right to modify, revise, change or withdraw any or all of the same in its sole and absolute discretion and without prior notice. Depictions of furnishings, finishes, appliances, counters, soffits, floor coverings and other matters of detail, including, without limitation, items of finish and decoration are conceptual only and are not necessarily included in each unit. Consult your Agreement and the Prospectus for items included with your unit.

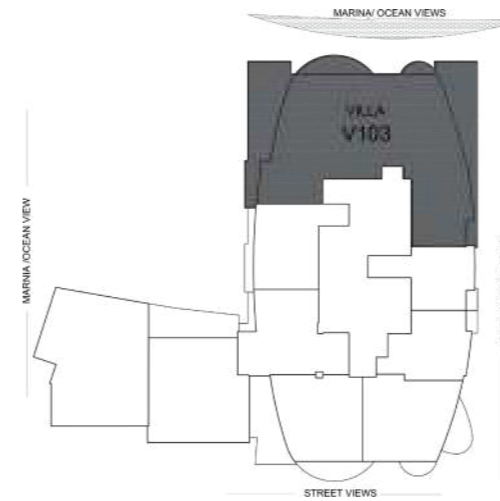
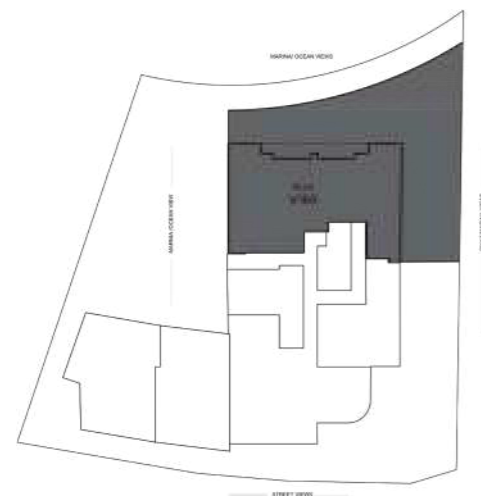


DUPLEX VILLA TYPE V-103 (FACING MARINA)

MARINA



MARINA



Area Details Type:
V-103 (Duplex Villa)

Level:
Ground + 1st Floor

Living Area:
4,846.88 sq. ft.

Balcony Area:
4,407.80 sq. ft.

Total Area:
9,254.68 sq. ft.

All room sizes and floor plan measurements are approximate and may vary per unit. Floor plans and unit features are preliminary and proposed only. The Developer reserves the right to modify, revise, change or withdraw any or all of the same in its sole and absolute discretion and without prior notice. Depictions of furnishings, finishes, appliances, counters, soffits, floor coverings and other matters of detail, including, without limitation, items of finish and decoration are conceptual only and are not necessarily included in each unit. Consult your Agreement and the Prospectus for items included with your unit.



DUPLEX VILLA TYPE V-102 (FACING MARINA)



Area Details Type:

V-102 (Duplex Villa)

Level:

1st + 2nd Floor

Living Area:

1,971.41 sq. ft.

Balcony Area:

492.34 sq. ft.

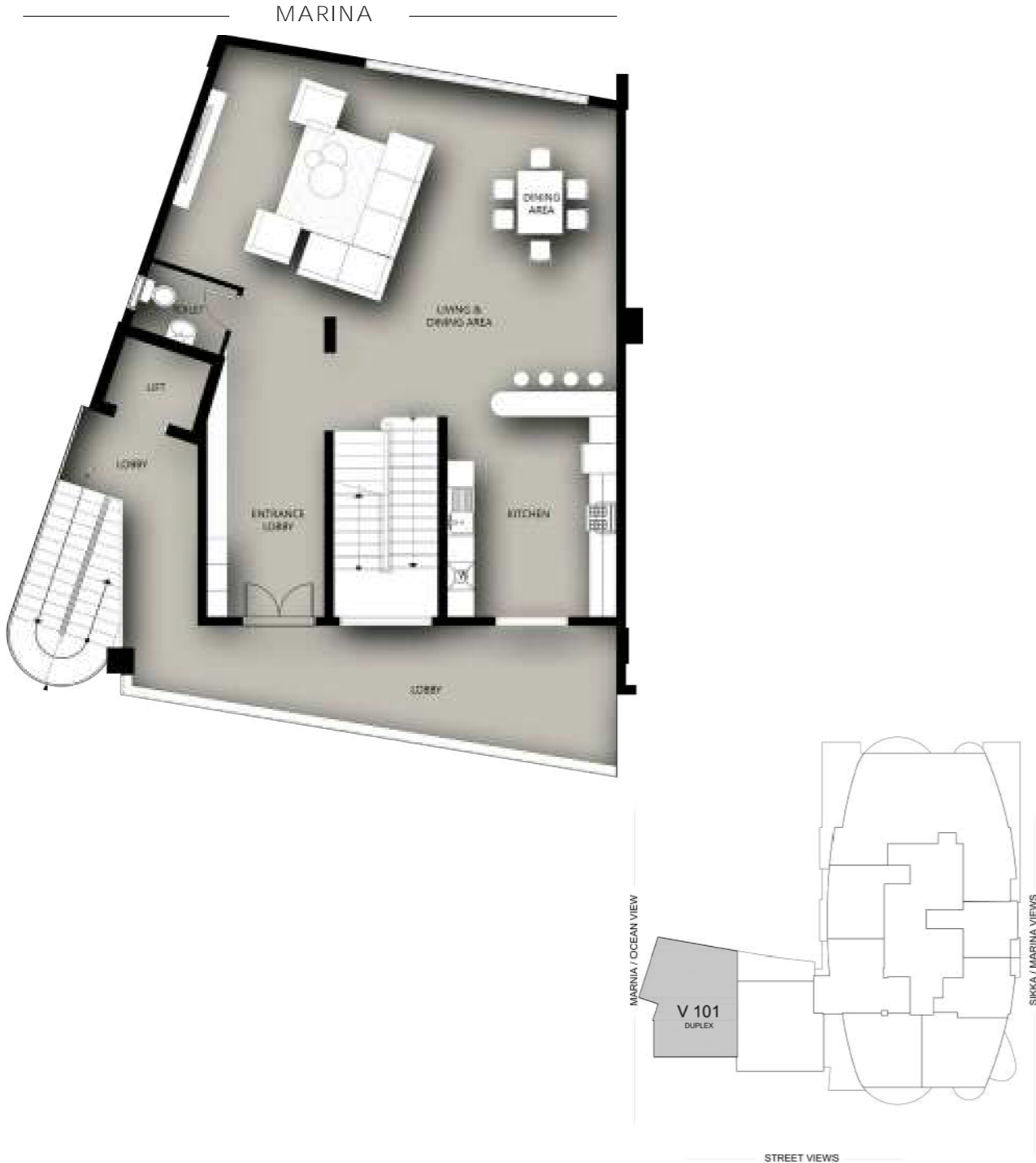
Total Area:

2,463.75 sq. ft.

All room sizes and floor plan measurements are approximate and may vary per unit. Floor plans and unit features are preliminary and proposed only. The Developer reserves the right to modify, revise, change or withdraw any or all of the same in its sole and absolute discretion and without prior notice. Depictions of furnishings, finishes, appliances, counters, soffits, floor coverings and other matters of detail, including, without limitation, items of finish and decoration are conceptual only and are not necessarily included in each unit. Consult your Agreement and the Prospectus for items included with your unit.



DUPLEX VILLA TYPE V-101 (FACING MARINA)



Area Details Type:
V-101 (Duplex Villa)

Level:
1st + 2nd Floor

Living Area:
2,563.75 sq. ft.

Balcony Area:
299.77 sq. ft.

Total Area:
2,863.52 sq. ft.

All room sizes and floor plan measurements are approximate and may vary per unit. Floor plans and unit features are preliminary and proposed only. The Developer reserves the right to modify, revise, change or withdraw any or all of the same in its sole and absolute discretion and without prior notice. Depictions of furnishings, finishes, appliances, counters, soffits, floor coverings and other matters of detail, including, without limitation, items of finish and decoration are conceptual only and are not necessarily included in each unit. Consult your Agreement and the Prospectus for items included with your unit.



PENTHOUSE ROOF LEVEL
25th FLOOR



Area Details Type:
Roof

Level:
25th Floor

Living Area:
3,592.13 sq. ft.

Balcony Area:
3,188.49 sq. ft.

Total Area:
6,780.62 sq. ft.

PENTHOUSE ROOF LEVEL
26th FLOOR



Area Details Type:
Roof

Level:
26th Floor

Living Area:
3,598.05 sq. ft.

Balcony Area:
2,443.08 sq. ft.

Total Area:
6,014.14 sq. ft.

All room sizes and floor plan measurements are approximate and may vary per unit. Floor plans and unit features are preliminary and proposed only. The Developer reserves the right to modify, revise, change or withdraw any or all of the same in its sole and absolute discretion and without prior notice. Depictions of furnishings, finishes, appliances, counters, soffits, floor coverings and other matters of detail, including, without limitation, items of finish and decoration are conceptual only and are not necessarily included in each unit. Consult your Agreement and the Prospectus for items included with your unit.





800DEVMARK

Condor Marina Star Sales Center
Dubai Marina, Dubai, UAE

DISCLAIMER

Any images and visualizations contained herein are provided for illustrative and marketing purposes only. All information contained herein is subject to change without notice and without liability and only the information contained in the final Sales and Purchase Agreement entered into between the Seller and Buyer will have any legal effect. E&OE.