



UNIT - 501



1 BHK



| | |
|----------------------------|-------------------|
| LEVEL : FIFTH FLOOR | |
| UNIT NO : 501 | |
| SUITE AREA : | 599 Sq. ft |
| BALCONY AREA : | 242 Sq. ft |
| TOTAL AREA : | 841 Sq. ft |

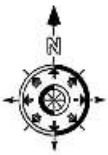
Disclaimer: all pictures, plans, layouts, information, data and details included in this brochure are indicative only and may change at any time up to the final 'as built' status in accordance with the final designs of the project, regulatory approvals and planning permissions.



GARDENS-2
BY IMAN



UNIT - 502



STUDIO

| | |
|---------------------|------------|
| LEVEL : FIFTH FLOOR | |
| UNIT NO : 502 | |
| SUITE AREA : | 383 Sq. ft |
| BALCONY AREA : | 135 Sq. ft |
| TOTAL AREA : | 518 Sq. ft |

Disclaimer: all pictures, plans, layouts, information, data and details included in this brochure are indicative only and may change at any time up to the final 'as built' status in accordance with the final designs of the project, regulatory approvals and planning permissions.



GARDENS·2

BY IMAN



UNIT - 503



STUDIO

| | |
|---------------------|------------|
| LEVEL : FIFTH FLOOR | |
| UNIT NO : 503 | |
| SUITE AREA : | 382 Sq. ft |
| BALCONY AREA : | 73 Sq. ft |
| TOTAL AREA : | 455 Sq. ft |

Disclaimer: all pictures, plans, layouts, information, data and details included in this brochure are indicative only and may change at any time up to the final 'as built' status in accordance with the final designs of the project, regulatory approvals and planning permissions.



GARDENS·2

BY IMAN



UNIT - 504



STUDIO

| | |
|----------------------------|-------------------|
| LEVEL : FIFTH FLOOR | |
| UNIT NO : 504 | |
| SUITE AREA : | 382 Sq. ft |
| BALCONY AREA : | 46 Sq. ft |
| TOTAL AREA : | 428 Sq. ft |

Disclaimer: all pictures, plans, layouts, information, data and details included in this brochure are indicative only and may change at any time up to the final 'as built' status in accordance with the final designs of the project, regulatory approvals and planning permissions.



GARDENS·2
BY IMAN



UNIT - 505



STUDIO

| | |
|---------------------|-----------|
| LEVEL : FIFTH FLOOR | |
| UNIT NO : 505 | |
| SUITE AREA : | 366 Sq.ft |
| BALCONY AREA : | 56 Sq.ft |
| TOTAL AREA : | 422 Sq.ft |

Disclaimer: all pictures, plans, layouts, information, data and details included in this brochure are indicative only and may change at any time up to the final 'as built' status in accordance with the final designs of the project, regulatory approvals and planning permissions.



GARDENS-2

BY IMAN



UNIT - 506



STUDIO

| | |
|---------------------|-----------|
| LEVEL : FIFTH FLOOR | |
| UNIT NO : 506 | |
| SUITE AREA : | 361 Sq.ft |
| BALCONY AREA : | 75 Sq.ft |
| TOTAL AREA : | 436 Sq.ft |

Disclaimer: all pictures, plans, layouts, information, data and details included in this brochure are indicative only and may change at any time up to the final 'as built' status in accordance with the final designs of the project, regulatory approvals and planning permissions.





UNIT - 507



STUDIO

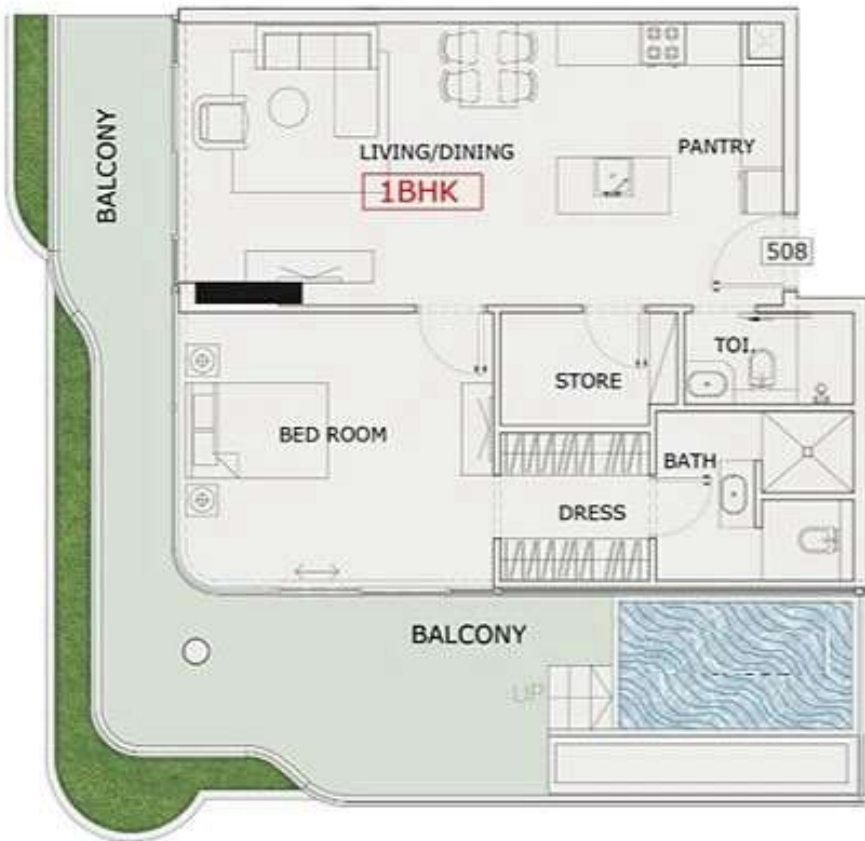
| | |
|---------------------|-----------|
| LEVEL : FIFTH FLOOR | |
| UNIT NO : 507 | |
| SUITE AREA : | 361 Sq.ft |
| BALCONY AREA : | 75 Sq.ft |
| TOTAL AREA : | 436 Sq.ft |

Disclaimer: all pictures, plans, layouts, information, data and details included in this brochure are indicative only and may change at any time up to the final 'as built' status in accordance with the final designs of the project, regulatory approvals and planning permissions.



GARDENS·2

BY IMAN



UNIT - 508

1 BHK

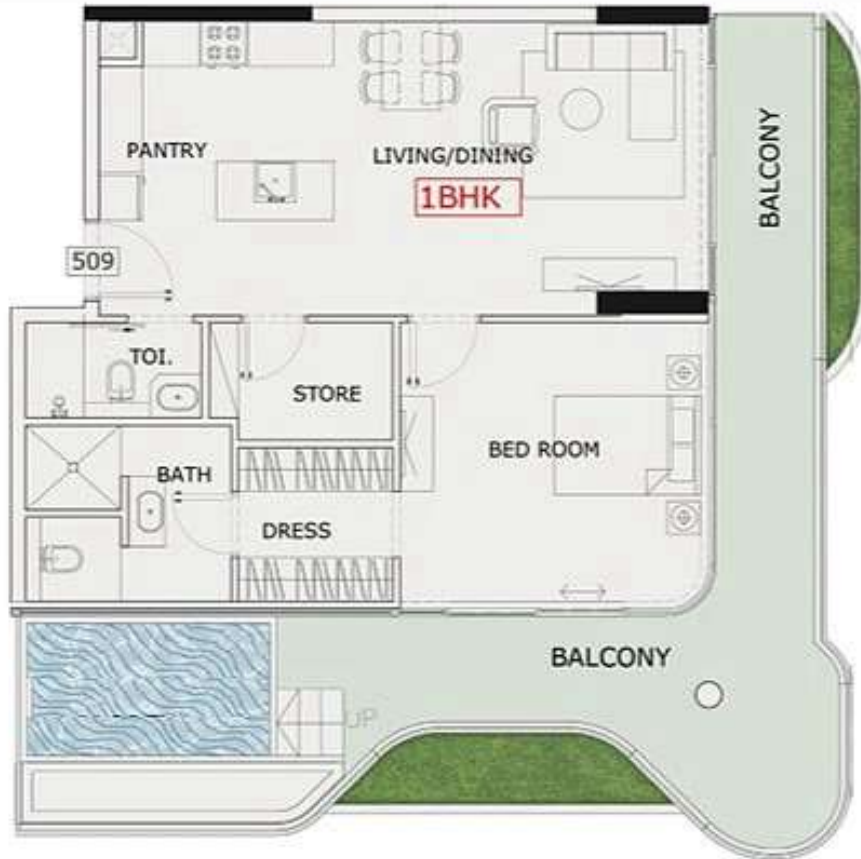
| | |
|---------------------|------------|
| LEVEL : FIFTH FLOOR | |
| UNIT NO : 508 | |
| SUITE AREA : | 792 Sq.ft |
| BALCONY AREA : | 462 Sq.ft |
| TOTAL AREA : | 1254 Sq.ft |

Disclaimer: all pictures, plans, layouts, information, data and details included in this brochure are indicative only and may change at any time up to the final 'as built' status in accordance with the final designs of the project, regulatory approvals and planning permissions.



GARDENS·2

BY IMAN



UNIT - 509

1 BHK

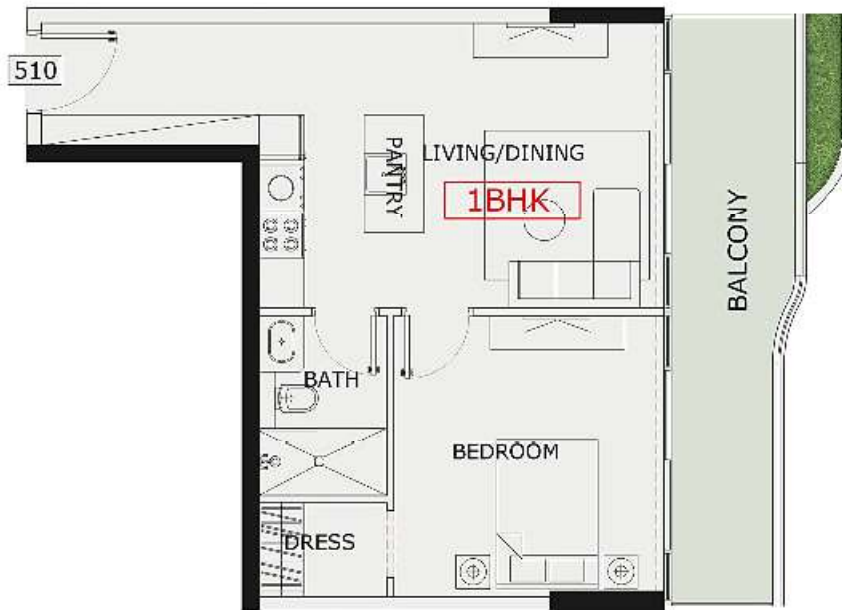
| | |
|---------------------|------------|
| LEVEL : FIFTH FLOOR | |
| UNIT NO : 509 | |
| SUITE AREA : | 772 Sq.ft |
| BALCONY AREA : | 442 Sq.ft |
| TOTAL AREA : | 1214 Sq.ft |

Disclaimer: all pictures, plans, layouts, information, data and details included in this brochure are indicative only and may change at any time up to the final 'as built' status in accordance with the final designs of the project, regulatory approvals and planning permissions.

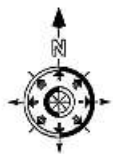


GARDENS·2

BY IMAN



UNIT - 510



1 BHK



| | |
|----------------------------|-------------------|
| LEVEL : FIFTH FLOOR | |
| UNIT NO : 510 | |
| SUITE AREA : | 526 Sq. ft |
| BALCONY AREA : | 143 Sq. ft |
| TOTAL AREA : | 669 Sq. ft |

Disclaimer: all pictures, plans, layouts, information, data and details included in this brochure are indicative only and may change at any time up to the final 'as built' status in accordance with the final designs of the project, regulatory approvals and planning permissions.



GARDENS·2
BY IMAN



UNIT - 511



STUDIO

| | |
|---------------------|-----------|
| LEVEL : FIFTH FLOOR | |
| UNIT NO : 511 | |
| SUITE AREA : | 351 Sq.ft |
| BALCONY AREA : | 78 Sq.ft |
| TOTAL AREA : | 429 Sq.ft |

Disclaimer: all pictures, plans, layouts, information, data and details included in this brochure are indicative only and may change at any time up to the final 'as built' status in accordance with the final designs of the project, regulatory approvals and planning permissions.

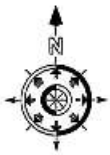


GARDENS·2

BY IMAN



UNIT - 512



STUDIO

| | |
|---------------------|-----------|
| LEVEL : FIFTH FLOOR | |
| UNIT NO : 512 | |
| SUITE AREA : | 351 Sq.ft |
| BALCONY AREA : | 78 Sq.ft |
| TOTAL AREA : | 429 Sq.ft |

Disclaimer: all pictures, plans, layouts, information, data and details included in this brochure are indicative only and may change at any time up to the final 'as built' status in accordance with the final designs of the project, regulatory approvals and planning permissions.



GARDENS·2
BY IMAN



UNIT - 513



STUDIO

| | |
|----------------------------|------------------|
| LEVEL : FIFTH FLOOR | |
| UNIT NO : 513 | |
| SUITE AREA : | 351 Sq.ft |
| BALCONY AREA : | 78 Sq.ft |
| TOTAL AREA : | 429 Sq.ft |

Disclaimer: all pictures, plans, layouts, information, data and details included in this brochure are indicative only and may change at any time up to the final 'as built' status in accordance with the final designs of the project, regulatory approvals and planning permissions.

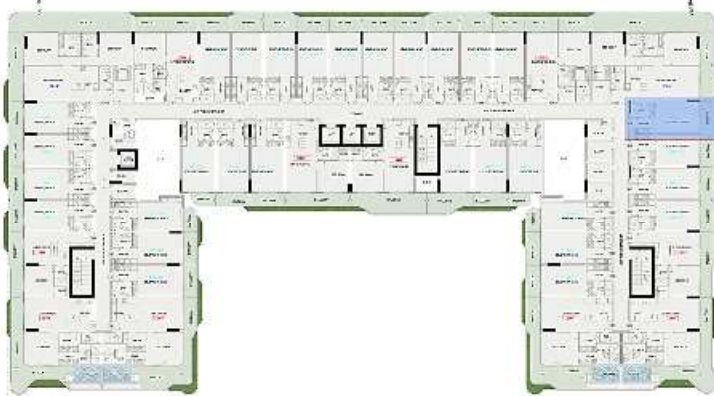
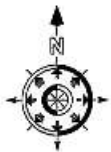


GARDENS-2

BY IMAN



UNIT - 514



STUDIO

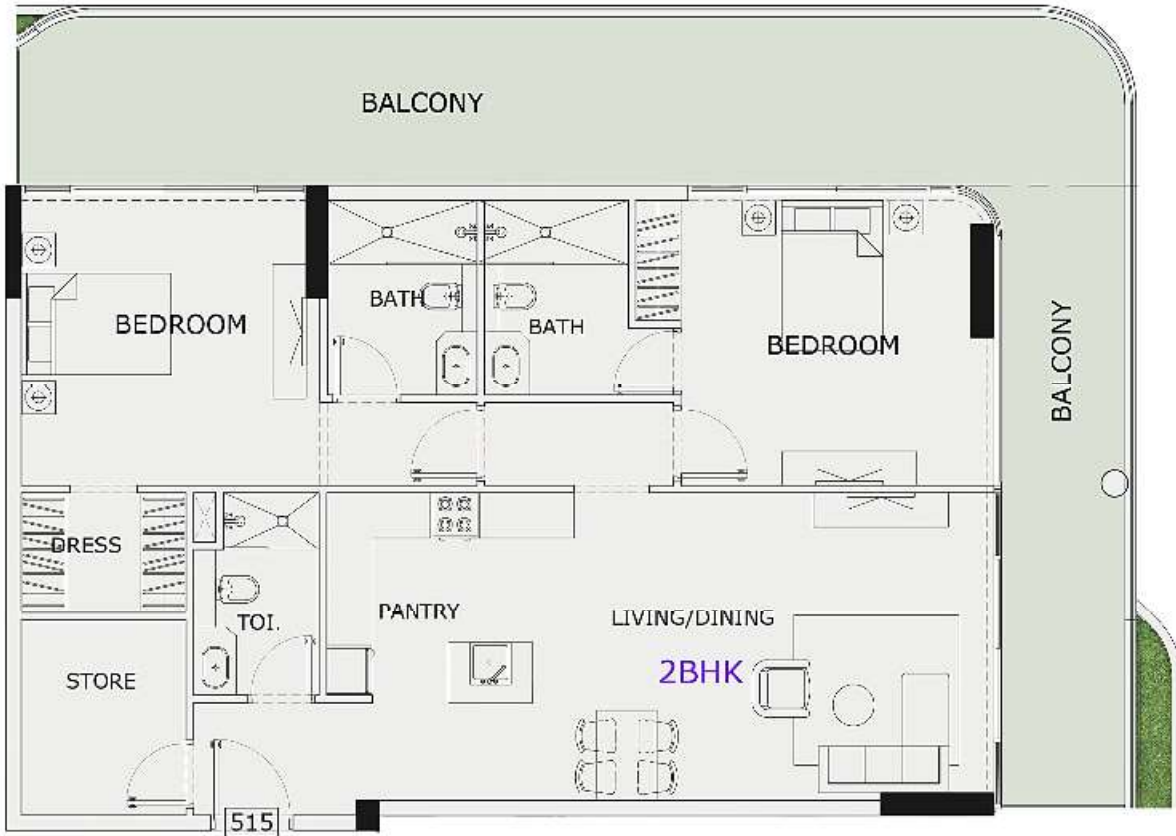
| | |
|---------------------|-----------|
| LEVEL : FIFTH FLOOR | |
| UNIT NO : 514 | |
| SUITE AREA : | 351 Sq.ft |
| BALCONY AREA : | 78 Sq.ft |
| TOTAL AREA : | 429 Sq.ft |

Disclaimer: all pictures, plans, layouts, information, data and details included in this brochure are indicative only and may change at any time up to the final 'as built' status in accordance with the final designs of the project, regulatory approvals and planning permissions.



GARDENS·2

BY IMAN



UNIT - 515



2 BHK

| | |
|---------------------|------------|
| LEVEL : FIFTH FLOOR | |
| UNIT NO : 515 | |
| SUITE AREA : | 1162 Sq.ft |
| BALCONY AREA : | 548 Sq.ft |
| TOTAL AREA : | 1710 Sq.ft |

Disclaimer: all pictures, plans, layouts, information, data and details included in this brochure are indicative only and may change at any time up to the final 'as built' status in accordance with the final designs of the project, regulatory approvals and planning permissions.



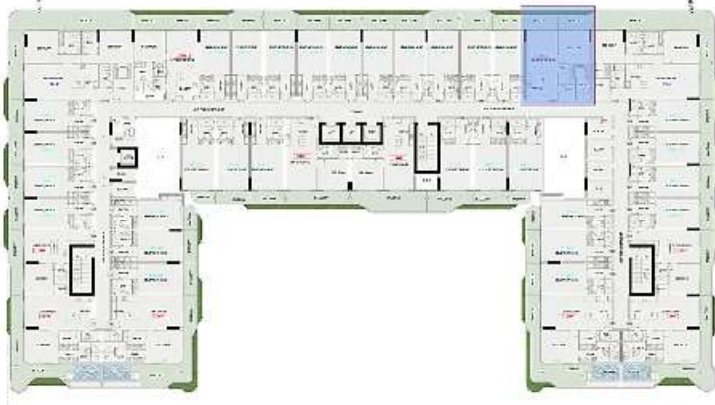
GARDENS-2
BY IMAN



UNIT - 516



1 BHK



| | |
|----------------------------|------------------|
| LEVEL : FIFTH FLOOR | |
| UNIT NO : 516 | |
| SUITE AREA : | 701 Sq.ft |
| BALCONY AREA : | 156 Sq.ft |
| TOTAL AREA : | 857 Sq.ft |

Disclaimer: all pictures, plans, layouts, information, data and details included in this brochure are indicative only and may change at any time up to the final 'as built' status in accordance with the final designs of the project, regulatory approvals and planning permissions.



GARDENS·2
BY IMAN



UNIT - 517



STUDIO

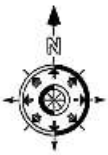
| | |
|---------------------|-----------|
| LEVEL : FIFTH FLOOR | |
| UNIT NO : 517 | |
| SUITE AREA : | 351 Sq.ft |
| BALCONY AREA : | 78 Sq.ft |
| TOTAL AREA : | 429 Sq.ft |

Disclaimer: all pictures, plans, layouts, information, data and details included in this brochure are indicative only and may change at any time up to the final 'as built' status in accordance with the final designs of the project, regulatory approvals and planning permissions.





UNIT - 518



STUDIO

| | |
|---------------------|-----------|
| LEVEL : FIFTH FLOOR | |
| UNIT NO : 518 | |
| SUITE AREA : | 351 Sq.ft |
| BALCONY AREA : | 101 Sq.ft |
| TOTAL AREA : | 452 Sq.ft |

Disclaimer: all pictures, plans, layouts, information, data and details included in this brochure are indicative only and may change at any time up to the final 'as built' status in accordance with the final designs of the project, regulatory approvals and planning permissions.

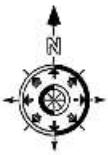


GARDENS·2

BY IMAN



UNIT - 519



STUDIO

| | |
|---------------------|-----------|
| LEVEL : FIFTH FLOOR | |
| UNIT NO : 519 | |
| SUITE AREA : | 351 Sq.ft |
| BALCONY AREA : | 101 Sq.ft |
| TOTAL AREA : | 452 Sq.ft |

Disclaimer: all pictures, plans, layouts, information, data and details included in this brochure are indicative only and may change at any time up to the final 'as built' status in accordance with the final designs of the project, regulatory approvals and planning permissions.

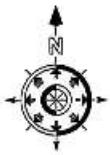


GARDENS·2

BY IMAN



UNIT - 520



STUDIO

| | |
|----------------------------|------------------|
| LEVEL : FIFTH FLOOR | |
| UNIT NO : 520 | |
| SUITE AREA : | 351 Sq.ft |
| BALCONY AREA : | 78 Sq.ft |
| TOTAL AREA : | 429 Sq.ft |

Disclaimer: all pictures, plans, layouts, information, data and details included in this brochure are indicative only and may change at any time up to the final 'as built' status in accordance with the final designs of the project, regulatory approvals and planning permissions.

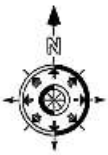


GARDENS·2

BY IMAN



UNIT - 521



STUDIO

| | |
|----------------------------|------------------|
| LEVEL : FIFTH FLOOR | |
| UNIT NO : 521 | |
| SUITE AREA : | 351 Sq.ft |
| BALCONY AREA : | 78 Sq.ft |
| TOTAL AREA : | 429 Sq.ft |

Disclaimer: all pictures, plans, layouts, information, data and details included in this brochure are indicative only and may change at any time up to the final 'as built' status in accordance with the final designs of the project, regulatory approvals and planning permissions.

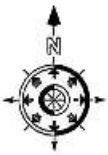


GARDENS·2

BY IMAN



UNIT - 522



STUDIO

| | |
|---------------------|-----------|
| LEVEL : FIFTH FLOOR | |
| UNIT NO : 522 | |
| SUITE AREA : | 351 Sq.ft |
| BALCONY AREA : | 78 Sq.ft |
| TOTAL AREA : | 429 Sq.ft |

Disclaimer: all pictures, plans, layouts, information, data and details included in this brochure are indicative only and may change at any time up to the final 'as built' status in accordance with the final designs of the project, regulatory approvals and planning permissions.

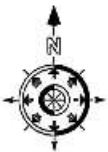


GARDENS·2

BY IMAN



UNIT - 523



STUDIO

| | |
|---------------------|-----------|
| LEVEL : FIFTH FLOOR | |
| UNIT NO : 523 | |
| SUITE AREA : | 351 Sq.ft |
| BALCONY AREA : | 78 Sq.ft |
| TOTAL AREA : | 429 Sq.ft |

Disclaimer: all pictures, plans, layouts, information, data and details included in this brochure are indicative only and may change at any time up to the final 'as built' status in accordance with the final designs of the project, regulatory approvals and planning permissions.



GARDENS·2

BY IMAN



UNIT - 524

STUDIO

| | |
|---------------------|-----------|
| LEVEL : FIFTH FLOOR | |
| UNIT NO : 524 | |
| SUITE AREA : | 351 Sq.ft |
| BALCONY AREA : | 101 Sq.ft |
| TOTAL AREA : | 452 Sq.ft |

Disclaimer: all pictures, plans, layouts, information, data and details included in this brochure are indicative only and may change at any time up to the final 'as built' status in accordance with the final designs of the project, regulatory approvals and planning permissions.

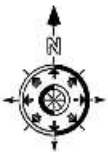


GARDENS-2

BY IMAN



UNIT - 525



STUDIO

| | |
|---------------------|------------|
| LEVEL : FIFTH FLOOR | |
| UNIT NO : 525 | |
| SUITE AREA : | 351 Sq. ft |
| BALCONY AREA : | 101 Sq. ft |
| TOTAL AREA : | 452 Sq. ft |

Disclaimer: all pictures, plans, layouts, information, data and details included in this brochure are indicative only and may change at any time up to the final 'as built' status in accordance with the final designs of the project, regulatory approvals and planning permissions.

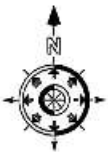


GARDENS·2

BY IMAN



UNIT - 526



STUDIO

| | |
|---------------------|-----------|
| LEVEL : FIFTH FLOOR | |
| UNIT NO : 526 | |
| SUITE AREA : | 351 Sq.ft |
| BALCONY AREA : | 78 Sq.ft |
| TOTAL AREA : | 429 Sq.ft |

Disclaimer: all pictures, plans, layouts, information, data and details included in this brochure are indicative only and may change at any time up to the final 'as built' status in accordance with the final designs of the project, regulatory approvals and planning permissions.

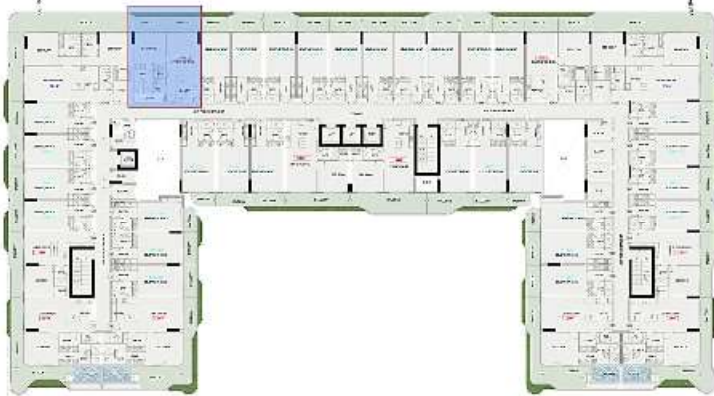
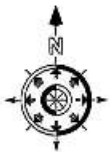


GARDENS·2

BY IMAN



UNIT - 527



1 BHK

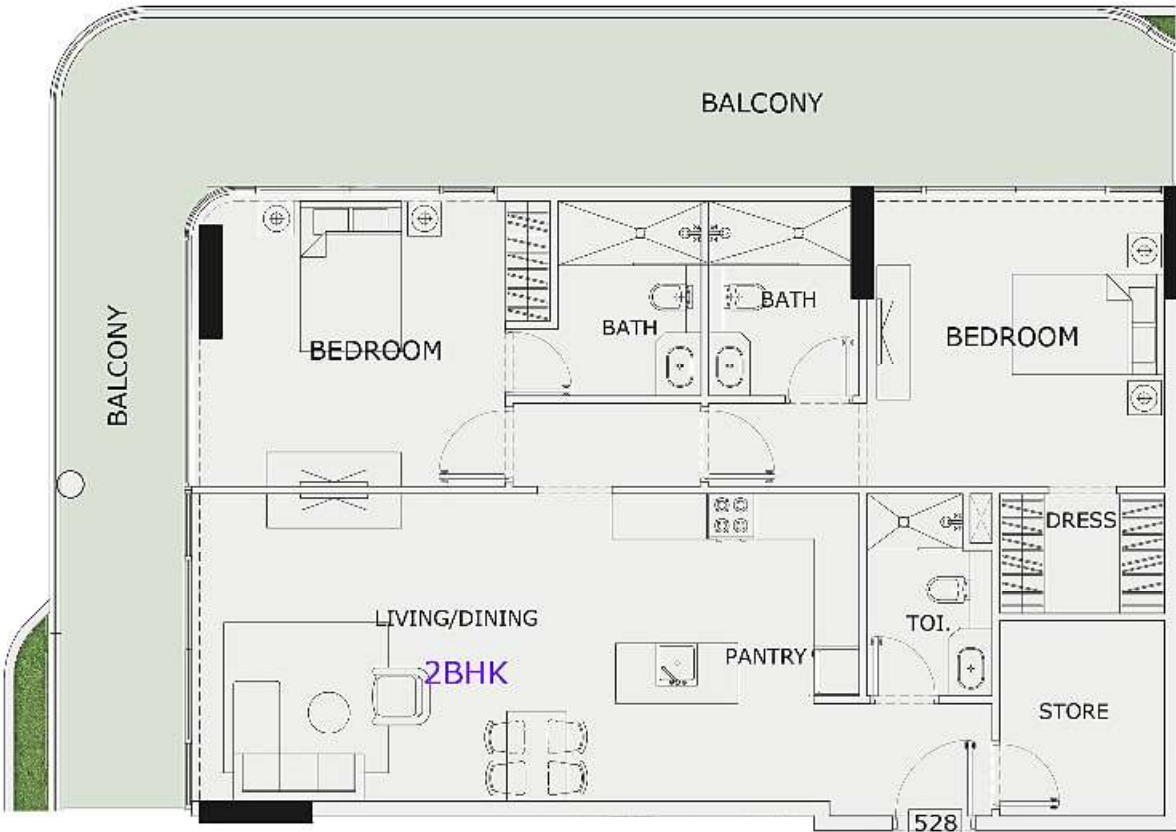
| | |
|----------------------------|-------------------|
| LEVEL : FIFTH FLOOR | |
| UNIT NO : 527 | |
| SUITE AREA : | 659 Sq. ft |
| BALCONY AREA : | 156 Sq. ft |
| TOTAL AREA : | 815 Sq. ft |

Disclaimer: all pictures, plans, layouts, information, data and details included in this brochure are indicative only and may change at any time up to the final 'as built' status in accordance with the final designs of the project, regulatory approvals and planning permissions.

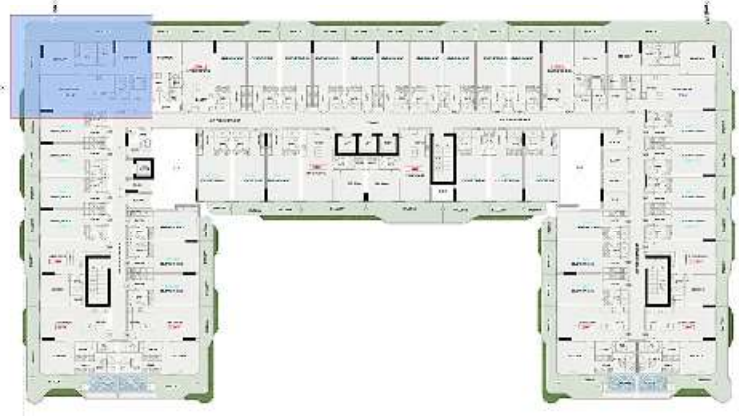


GARDENS·2

BY IMAN



UNIT - 528



2 BHK

| | |
|----------------------------|--------------------|
| LEVEL : FIFTH FLOOR | |
| UNIT NO : 528 | |
| SUITE AREA : | 1160 Sq. ft |
| BALCONY AREA : | 548 Sq. ft |
| TOTAL AREA : | 1708 Sq. ft |

Disclaimer: all pictures, plans, layouts, information, data and details included in this brochure are indicative only and may change at any time up to the final 'as built' status in accordance with the final designs of the project, regulatory approvals and planning permissions.



GARDENS·2
BY IMAN



UNIT - 529



STUDIO

LEVEL : FIFTH FLOOR

UNIT NO : 529

SUITE AREA : 351 Sq.ft

BALCONY AREA : 78 Sq.ft

TOTAL AREA : 429 Sq.ft

Disclaimer: all pictures, plans, layouts, information, data and details included in this brochure are indicative only and may change at any time up to the final 'as built' status in accordance with the final designs of the project, regulatory approvals and planning permissions.

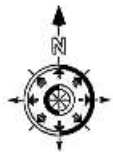


GARDENS·2

BY IMAN



UNIT - 530



STUDIO

| | |
|---------------------|-----------|
| LEVEL : FIFTH FLOOR | |
| UNIT NO : 530 | |
| SUITE AREA : | 351 Sq.ft |
| BALCONY AREA : | 78 Sq.ft |
| TOTAL AREA : | 429 Sq.ft |

Disclaimer: all pictures, plans, layouts, information, data and details included in this brochure are indicative only and may change at any time up to the final 'as built' status in accordance with the final designs of the project, regulatory approvals and planning permissions.

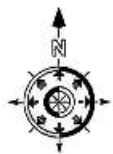


GARDENS·2

BY IMAN



UNIT - 531



STUDIO

| | |
|---------------------|------------|
| LEVEL : FIFTH FLOOR | |
| UNIT NO : 531 | |
| SUITE AREA : | 351 Sq. ft |
| BALCONY AREA : | 78 Sq. ft |
| TOTAL AREA : | 429 Sq. ft |

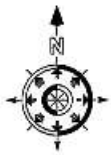


Disclaimer: all pictures, plans, layouts, information, data and details included in this brochure are indicative only and may change at any time up to the final 'as built' status in accordance with the final designs of the project, regulatory approvals and planning permissions.





UNIT - 532



STUDIO

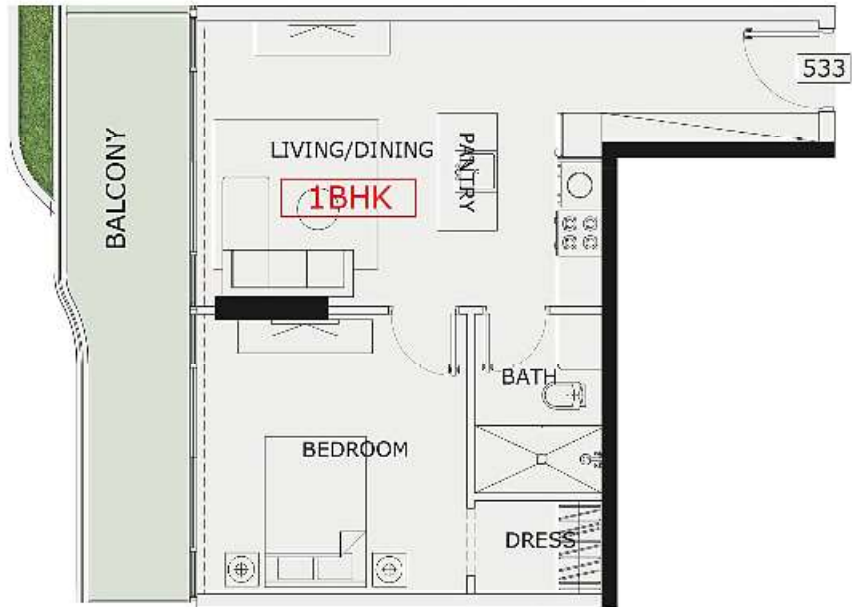
| | |
|---------------------|------------|
| LEVEL : FIFTH FLOOR | |
| UNIT NO : 532 | |
| SUITE AREA : | 351 Sq. ft |
| BALCONY AREA : | 78 Sq. ft |
| TOTAL AREA : | 429 Sq. ft |

Disclaimer: all pictures, plans, layouts, information, data and details included in this brochure are indicative only and may change at any time up to the final 'as built' status in accordance with the final designs of the project, regulatory approvals and planning permissions.

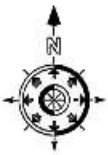


GARDENS-2

BY IMAN



UNIT - 533



1 BHK

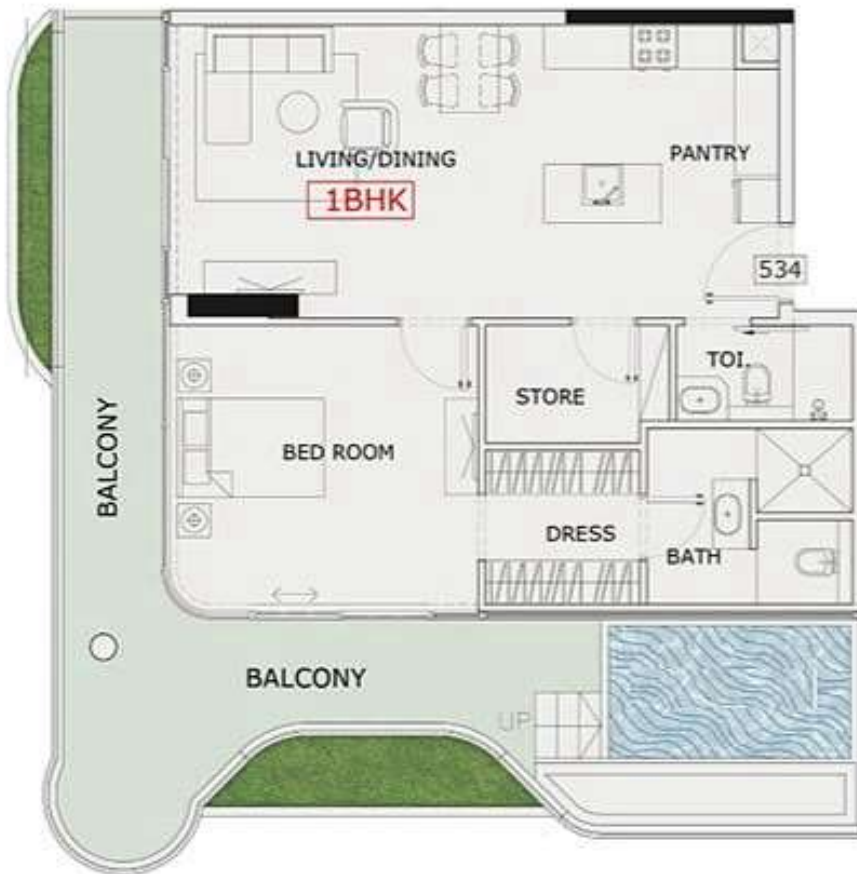
| | |
|---------------------|-----------|
| LEVEL : FIFTH FLOOR | |
| UNIT NO : 533 | |
| SUITE AREA : | 520 Sq.ft |
| BALCONY AREA : | 143 Sq.ft |
| TOTAL AREA : | 663 Sq.ft |

Disclaimer: all pictures, plans, layouts, information, data and details included in this brochure are indicative only and may change at any time up to the final 'as built' status in accordance with the final designs of the project, regulatory approvals and planning permissions.



GARDENS·2

BY IMAN

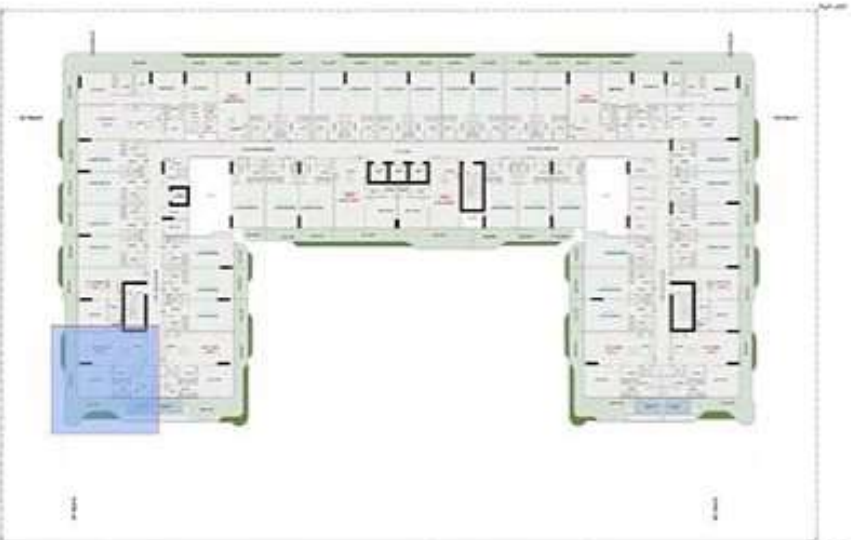


UNIT - 534



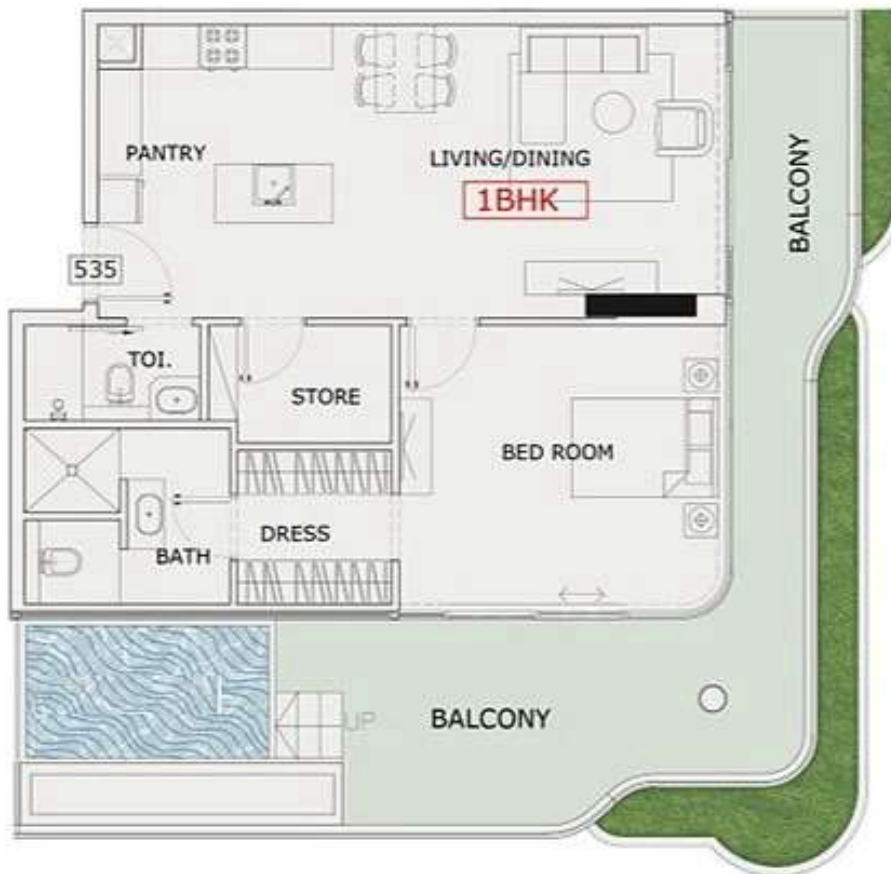
1 BHK

| | |
|---------------------|------------|
| LEVEL : FIFTH FLOOR | |
| UNIT NO : 534 | |
| SUITE AREA : | 772 Sq.ft |
| BALCONY AREA : | 438 Sq.ft |
| TOTAL AREA : | 1210 Sq.ft |



Disclaimer: all pictures, plans, layouts, information, data and details included in this brochure are indicative only and may change at any time up to the final 'as built' status in accordance with the final designs of the project, regulatory approvals and planning permissions.

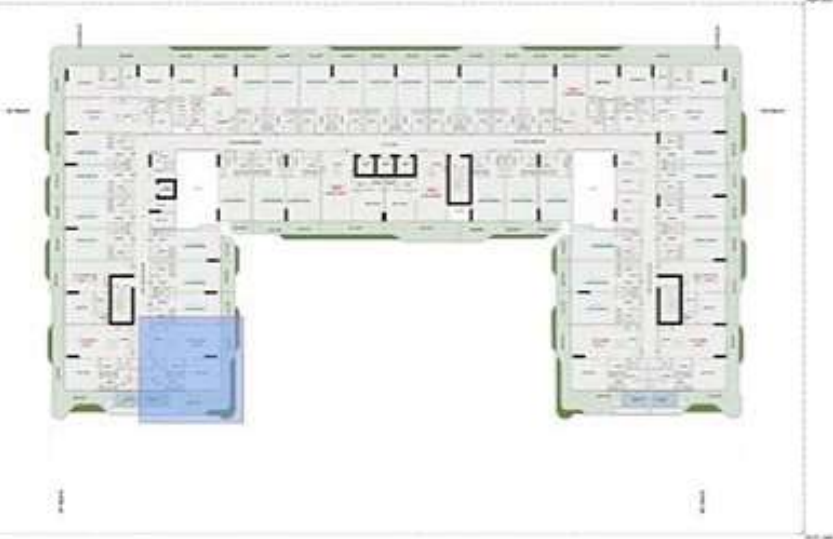




UNIT - 535

1 BHK

| | |
|---------------------|------------|
| LEVEL : FIFTH FLOOR | |
| UNIT NO : 535 | |
| SUITE AREA : | 792 Sq.ft |
| BALCONY AREA : | 462 Sq.ft |
| TOTAL AREA : | 1254 Sq.ft |

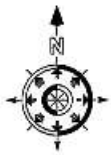


Disclaimer: all pictures, plans, layouts, information, data and details included in this brochure are indicative only and may change at any time up to the final 'as built' status in accordance with the final designs of the project, regulatory approvals and planning permissions.





UNIT - 536



STUDIO

| | |
|---------------------|-----------|
| LEVEL : FIFTH FLOOR | |
| UNIT NO : 536 | |
| SUITE AREA : | 361 Sq.ft |
| BALCONY AREA : | 75 Sq.ft |
| TOTAL AREA : | 436 Sq.ft |

Disclaimer: all pictures, plans, layouts, information, data and details included in this brochure are indicative only and may change at any time up to the final 'as built' status in accordance with the final designs of the project, regulatory approvals and planning permissions.

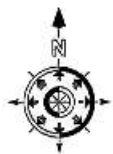


GARDENS·2

BY IMAN



UNIT - 537



STUDIO



| | |
|----------------------------|------------------|
| LEVEL : FIFTH FLOOR | |
| UNIT NO : 537 | |
| SUITE AREA : | 361 Sq.ft |
| BALCONY AREA : | 75 Sq.ft |
| TOTAL AREA : | 436 Sq.ft |

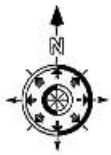
Disclaimer: all pictures, plans, layouts, information, data and details included in this brochure are indicative only and may change at any time up to the final 'as built' status in accordance with the final designs of the project, regulatory approvals and planning permissions.



GARDENS-2
BY IMAN



UNIT - 538



STUDIO

| | |
|---------------------|------------|
| LEVEL : FIFTH FLOOR | |
| UNIT NO : 538 | |
| SUITE AREA : | 366 Sq. ft |
| BALCONY AREA : | 56 Sq. ft |
| TOTAL AREA : | 422 Sq. ft |

Disclaimer: all pictures, plans, layouts, information, data and details included in this brochure are indicative only and may change at any time up to the final 'as built' status in accordance with the final designs of the project, regulatory approvals and planning permissions.

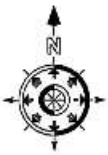


GARDENS-2

BY IMAN



UNIT - 539



STUDIO

| | |
|----------------------------|-------------------|
| LEVEL : FIFTH FLOOR | |
| UNIT NO : 539 | |
| SUITE AREA : | 382 Sq. ft |
| BALCONY AREA : | 46 Sq. ft |
| TOTAL AREA : | 428 Sq. ft |

Disclaimer: all pictures, plans, layouts, information, data and details included in this brochure are indicative only and may change at any time up to the final 'as built' status in accordance with the final designs of the project, regulatory approvals and planning permissions.



GARDENS·2

BY IMAN



UNIT - 540



STUDIO



| | |
|----------------------------|-------------------|
| LEVEL : FIFTH FLOOR | |
| UNIT NO : 540 | |
| SUITE AREA : | 382 Sq. ft |
| BALCONY AREA : | 73 Sq. ft |
| TOTAL AREA : | 455 Sq. ft |

Disclaimer: all pictures, plans, layouts, information, data and details included in this brochure are indicative only and may change at any time up to the final 'as built' status in accordance with the final designs of the project, regulatory approvals and planning permissions.



GARDENS·2
BY IMAN



UNIT - 541

STUDIO

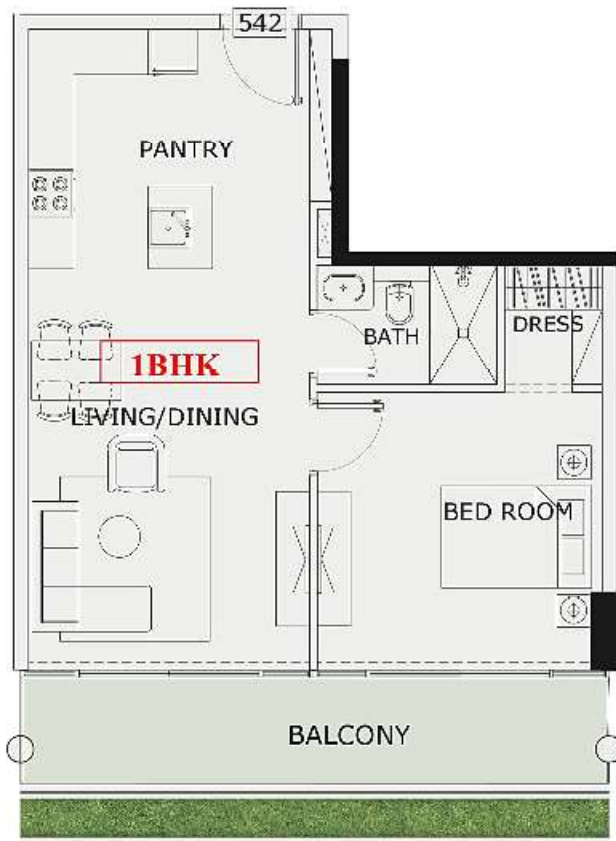
| | |
|---------------------|------------|
| LEVEL : FIFTH FLOOR | |
| UNIT NO : 541 | |
| SUITE AREA : | 383 Sq. ft |
| BALCONY AREA : | 73 Sq. ft |
| TOTAL AREA : | 456 Sq. ft |

Disclaimer: all pictures, plans, layouts, information, data and details included in this brochure are indicative only and may change at any time up to the final 'as built' status in accordance with the final designs of the project, regulatory approvals and planning permissions.



GARDENS-2

BY IMAN



UNIT - 542



1 BHK



| | |
|----------------------------|------------------|
| LEVEL : FIFTH FLOOR | |
| UNIT NO : 542 | |
| SUITE AREA : | 604 Sq.ft |
| BALCONY AREA : | 138 Sq.ft |
| TOTAL AREA : | 742 Sq.ft |

Disclaimer: all pictures, plans, layouts, information, data and details included in this brochure are indicative only and may change at any time up to the final 'as built' status in accordance with the final designs of the project, regulatory approvals and planning permissions.

